



RDMS 202
RDMS 202D



QUICKSTART GUIDE

RDMS 202 and RDMS 202D Quick Start Guide

Thank you for purchasing a RDMS 202 or RDMS 202D. The Allegro RDMS 202 and RDMS 202D are DLNA Certified® Digital Media Servers (DMS) that fully comply with the DLNA Networked Device Interoperability Guidelines Expanded (Version 1.5). Specifically targeted for use by DLNA Independent Certification Vendors (ICVs) and Consumer Electronics (CE) manufacturers creating DLNA enabled products, the RDMS 202 and RDMS 202D are ideal for validating interoperability with a fully function DMS within the DLNA 3 box model. The RDMS 202 and RDMS 202D are extremely configurable via a browser interface with many options including support for Upload, DIDL_S and DIDL_V containers, and link protection (RDMS 202D only). The RDMS 202D is available to DLNA Member companies that also have a valid DTLA license agreement.

Service and Support

Should you encounter a problem with your RDMS 202 or RDMS 202D, technical support can be obtained via the Allegro website. Please complete a Technical Support Request and our support staff will be in touch to help resolve your support issue.

www.allegrosoft.com/support_req.html

Getting to Know the RDMS 202

The RDMS 202 and RDMS 202D units are delivered with the following items in the box:

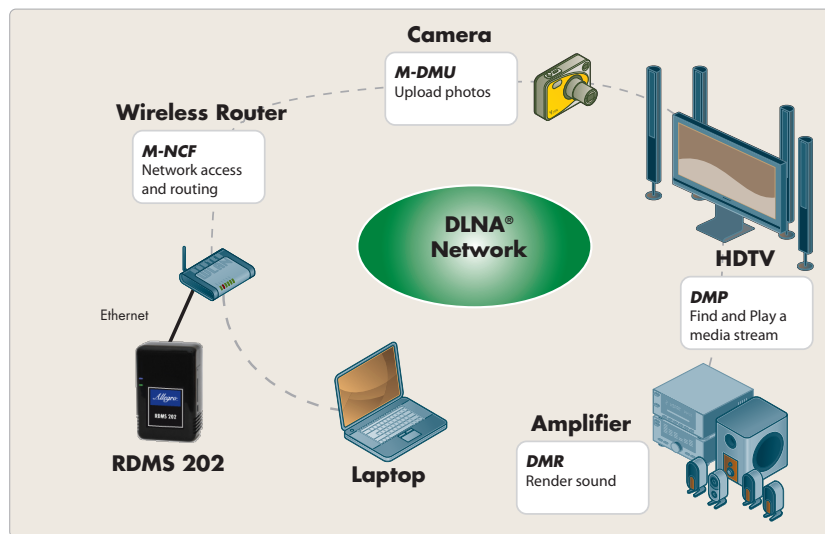
- RDMS 202 or RDMS 202D Digital Media Server
- RDMS 202/202D Quick Start Guide
- Ethernet Cable
- Power Cable and wall adapter plug
- Allegro PQI USB Memory stick with DLNA Certification Content



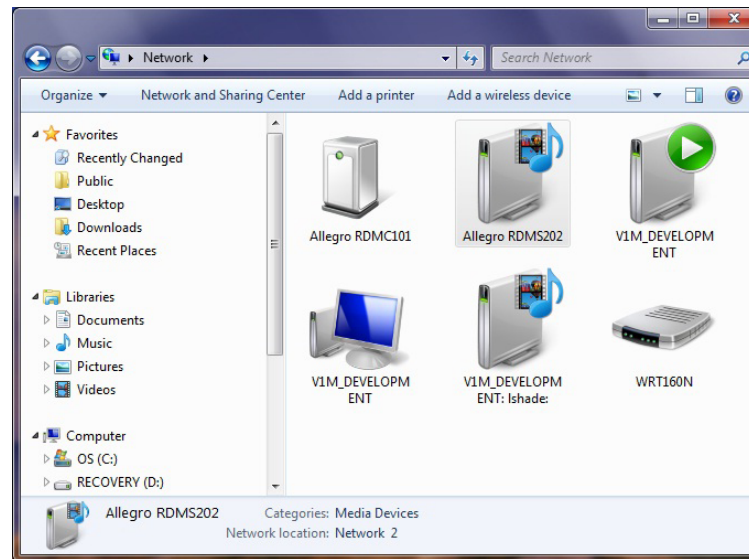
Allegro recommends making a backup of the pre-loaded content on the USB drive. The USB drive is provisioned with DLNA Certification content and then write protected at the factory. Before content can be added to or deleted from the USB drive the write protect switch must be moved to the unlocked position.

Connecting the RDMS 202 or RDMS 202D

1. Connect one end of the included networking cable to the RDMS 202 or RDMS 202D. Connect the other end to your router.
2. Connect the power cord to the RDMS 202 or RDMS 202D if not using the wall mount plug adapter. Plug the other end of the power cable or plug the entire unit if using the wall plug adapter into an AC outlet (110-240 Volts 50-60 Hz).



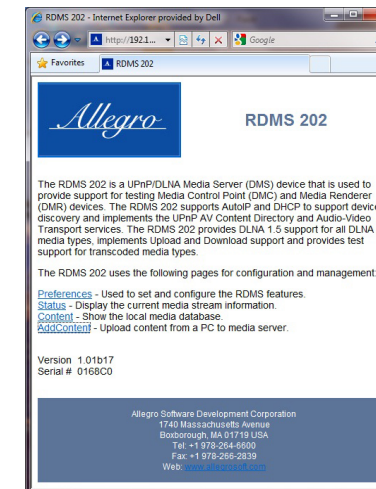
Communicating with the RDMS 202 or RDMS 202D



After ~10 seconds the RDMS 202 or RDMS 202D will appear in "My Network" as a UPnP Basic Device. Right click on the icon and select "View device webpage". This will cause the device Presentation webpage to appear in your browser.

RDMS 202 or RDMS202D Operation

With the Presentation page showing in a browser, the user can select a variety of *Preferences*, determine the *Status* of the unit, browse and delete *Content*, and Add *Content* to the unit.



For detailed discussions regarding the operation of the RDMS 202 or RDMS 202D please refer to the included manual or download the manual from the Allegro website.

www.allegrosoft.com/rdms202.html