

SUMMARY OF TELNET COMMANDS

Command	Description
browse	Browse current Server/Container
census	Initiate a new device discovery census
devicecaps	Get device capabilities
download	Download current selection
ff	Fast Forward current media stream
find	Find UPnP/DLNA devices
findrenderers	Find UPnP/DLNA Media Renderers
findservers	Find UPnP/DLNA Media Servers
formats	Get available formats from server for current object
fr	Fast Reverse current media stream
help	Show commands
metadata	Get meta data from server for current object
mute	Set mute control
name	Set friendly name of device
next	Select current Server/Renderer/Container/Object + 1
nexttrack	Select next track
pause	Pause current object from selected server to renderer
play	Send current object from selected server to renderer
playall	Play all items in container
playmode	Set Playmode option
playnext	Play selected item next
previous	Select current Server/Renderer/Container/Object - 1
previoustrack	Select previous track
quit	quit command
record	Start recording
recordquality	Set record quality
resume	Resume current media stream
seek	Position current item
select	Select a Server/Renderer/Container/Object
show	Show current selection
status	Get device status for current renderer and transport
stop	Stop current media stream
subscribe	Subscribe to renderer AVTransport events
transportactions	Get current transport actions
unsubscribe	Unsubscribe to renderer AVTransport events
up	Select parent Container of current Container/Object
upload	Upload the selected item to a Media Server
volume	Set Volume for current renderer



AV Demon RDMC 101

Quick Start Guide

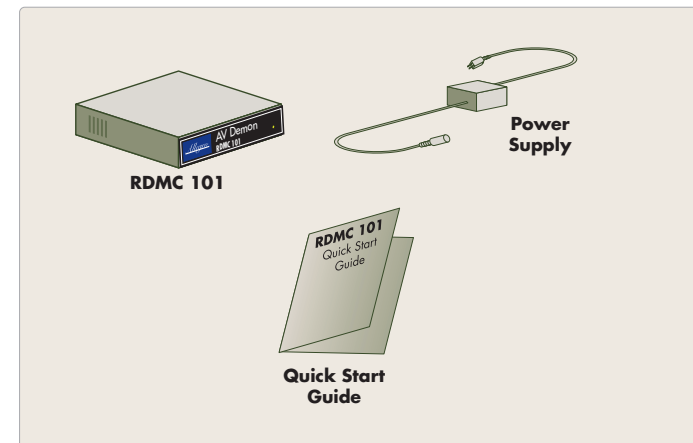
Thank you for purchasing the Allegro AV Demon RDMC 101. The Allegro AV Demon RDMC 101 is a DLNA Certified™ Digital Media Controller (DMC) that complies with the DLNA Networked Device Interoperability Guidelines:Expanded (Version 1.5). Specifically targeted for use by DLNA Independent Certification Vendors (ICV) and Consumer Electronics (CE) manufacturers creating DLNA enabled products, the RDMC 101 is ideal for validating interoperability within the DLNA 3 Box model.

BOX CONTENTS

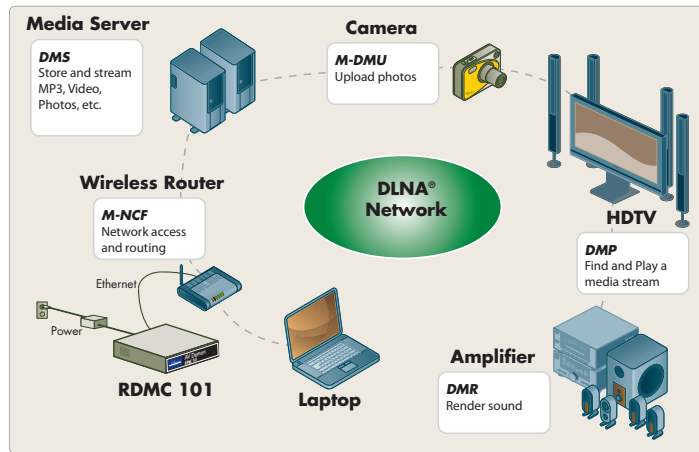
- Allegro AV Demon RDMC 101
- Power Supply
- Quick Start Guide



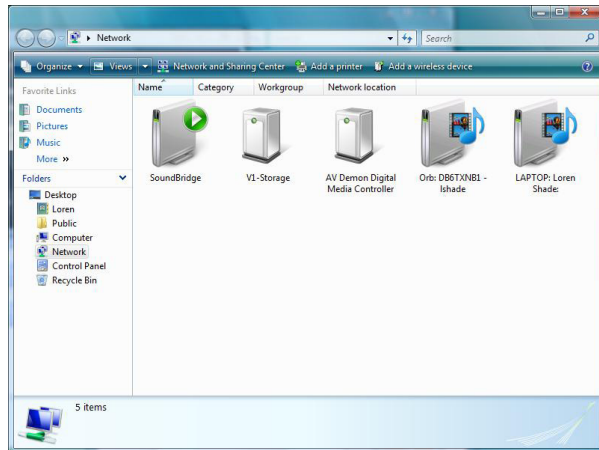
The AV Demon RDMC 101 Users Guide can be download from our website at www.allegrosoft.com/rdmc.html



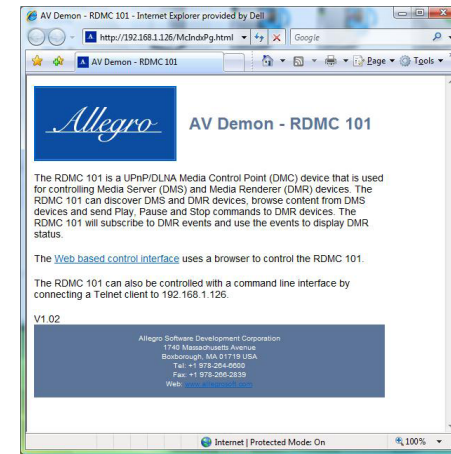
GETTING STARTED



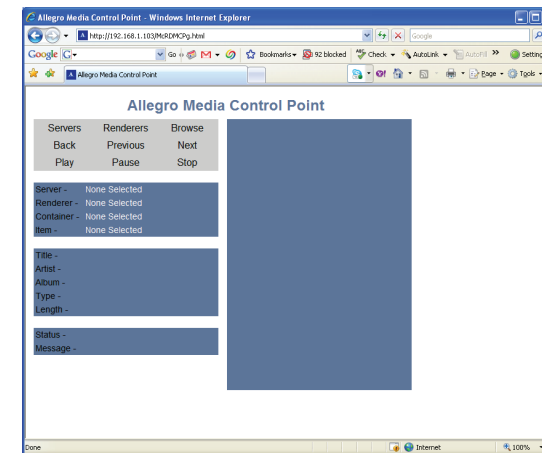
1. Connect one end of a standard networking cable to the back of the RDMC 101. Connect the other end to your router.
2. Connect the output of the power supply to the RDMC 101 and plug the supply into an AC outlet (110-240 Volts 50-60 Hz).
3. Flip the power switch on the back of the RDMC 101 to the "On" position.



After ~10 seconds the AV Demon RDMC will appear in "My Network" as a UPnP Basic Device. Double click on the AV Demon RDMC 101 icon and the following page will be displayed in a browser window.



Two interface options are available with the RDMC 101: Web based and Telnet. To select a web interface, click on the highlighted link and page below will be displayed. To access the Telnet interface, use a Telnet client to connect to the IP address shown on the initial browser page. The initial browser page identifies the IP address assigned to the RDMC 101 via DHCP or AutoIP configuration.



A summary of the Telnet commands are provided on the back of this guide.